

$$6x - 3y \geq 9$$

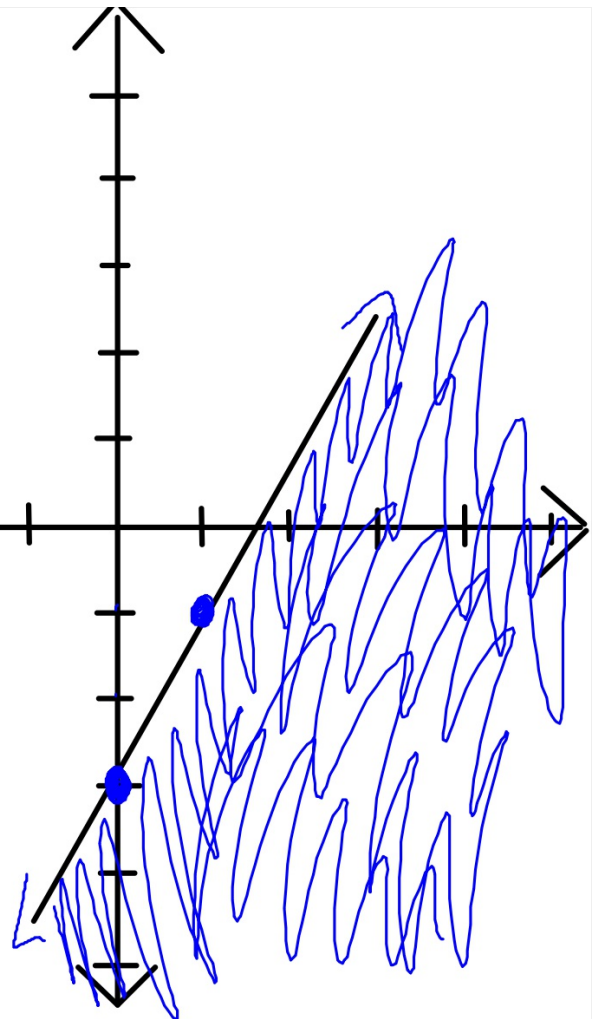
1. Solve for Y.

$$\begin{aligned} 6x - 3y &\geq 9 \\ -6x &\quad -6x \\ \hline -3y &\geq -6x + 9 \\ \hline -3 &\quad -3 \end{aligned}$$

2. Graph.

$$y \leq 2x - 3$$

3. Shade



$$2y > 3x + 6$$

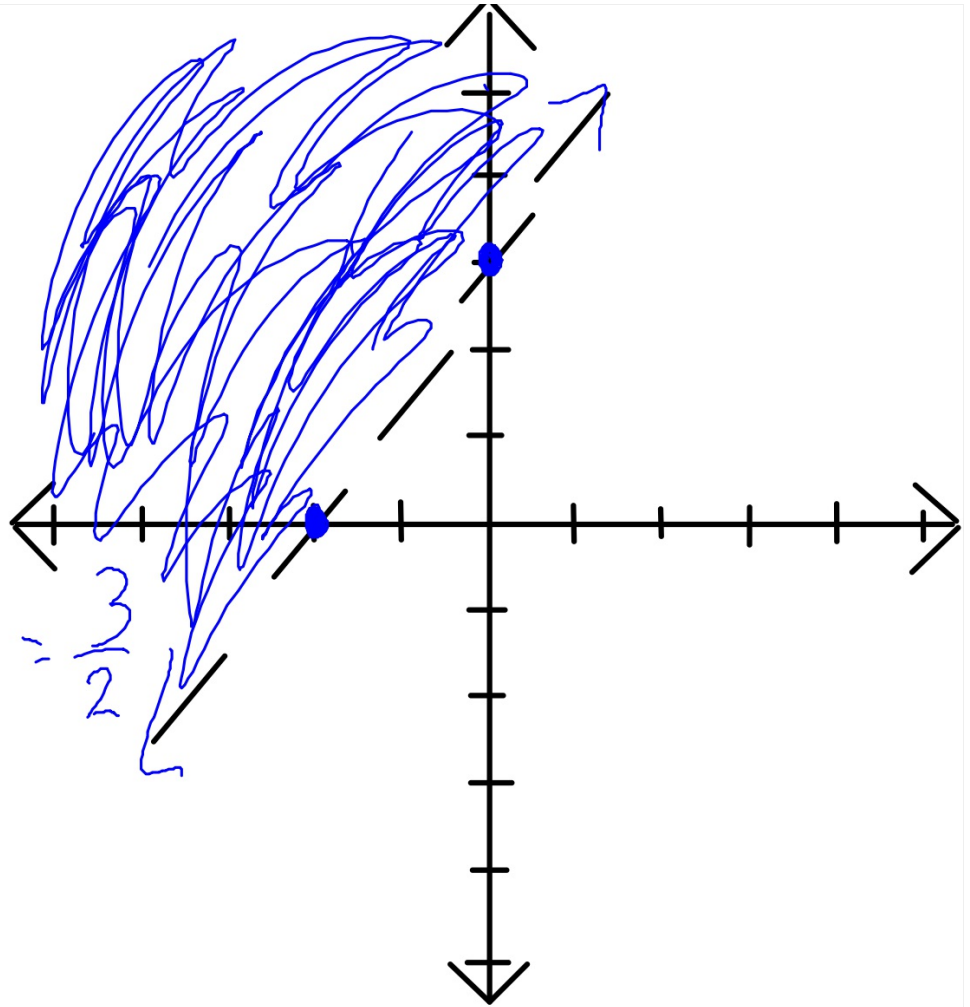
1. Solve for Y.

$$\frac{2y > 3x + 6}{2} \quad \frac{\quad}{2}$$
$$y > \frac{3}{2}x + 3$$

2. Graph

3. Shade

$$\frac{-3}{-2} = \frac{3}{2}$$



Check For Understanding

Graph the inequalities.

1. $y > x + 1$

2. $3y \geq 2x + 6$

3. $x + y \leq 3$

Homework

Graph the inequalities.

1. $2y < 4x - 6$

2. $3x + 4y \geq 12$

3. $x - y > 2$